

Plant List

EVERGREEN GARDEN

- *Taxus spp.* Spreading Yew
- *Buxus sempervirens* American Boxwood
- *Viburnum rhytidophyllum* Leatherleaf Viburnum
- *Prunus laurocerasus* Cherry Laurel
- *Picea pungens* Colorado Blue Spruce

GAZEBO GARDEN

- *Acer palmatum* Japanese Maple
- *Rosa spp.* New Dawn Climbing Rose
- *Rosa spp.* Knock Out Rose
- *Clematis viticella* Polish Spirit Clematis
- *Ilex crenata* Japanese Holly

XERISCAPE GARDEN

- *Sedum ternatum* Stonecrop
- *Sporobolus heterolepis* Prairie Dropseed
- *Yucca gloriosa* Spanish Dagger
- *Hypericum calycinum* St. Johns Wort
- *Liatris spicata* Prairie Gay Feather

EDIBLE GARDEN

- *Vaccinium angustifolium* Lowbush Blueberry
- *Monarda fistulosa* Bee Balm
- *Ceanothus americanus* New Jersey Tea
- *Matteuccia struthiopteris* Ostrich Fern
- *Asarum canadense* Wild Ginger

GRASS GARDEN

- *Festuca glauca* Blue Fescue
- *Pennisetum alopecuroides* Fountain Grass
- *Imperata cylindrical* Japanese Blood Grass
- *Liriope muscari* Big Blue Liriope
- *Miscanthus sinensis* Maiden Grass

Plant List

BUTTERFLY & HUMMINGBIRD GARDEN

- *Achillea millifolium* Yarrow
- *Lobelia cardinalis* Cardinal Flower
- *Buddleia davidii* Butterfly Bush
- *Viburnum dentatum* Arrowwood
- *Itea virginica* Virginia Sweetenspire

SHADE GARDEN

- *Mahonia aquifolium* Oregon Grape Holly
- *Polystichum acrostichoides* Christmas Fern
- *Osmunda regalis* Royal Fern
- *Kalmia latifolia* Mountain Laurel
- *Iris crestata* Crested Iris

GROVE OF THE SENSES

- *Lonicera fragrantissima* Winter Honeysuckle
- *Parrotia persica* Persian Ironwood
- *Prunus subhirtella* Weeping Cherry
- *Azalea kurume* Azalea
- *Rhododendron spp.* Rhododendron
- *Betula pendula* European White Birch
- *Stewartia pseudocamellia* Stewartia
- *Acer ginnala* Amur Maple
- *Acer griseum* Paperbark Maple
- *Viburnum carlesii* Korean Spicebush
- *Thymus vulgaris* Thyme
- *Acer buergerianum* Trident Maple
- *Salvia officinalis* Sage
- *Cercidiphyllum japonicum* Katsura Tree
- *Aesculus hippocastanum* Horse Chestnut
- *Taxus cuspidata* Spreading Yew
- *Rudbeckia hirta* Black Eyed Susan



ROCKFIELD PARK

Horticultural Gardens

Bel Air



CONTACT US FOR INFORMATION

For additional information about the garden
contact the Bel Air Planning Department at
planning@belairmd.org or 410 638 4540.

TOWN OF BEL AIR

39 N. Hickory Avenue
Bel Air, MD 21014
410-638 4540

www.belairmd.org

Located Behind Rockfield Manor
501 E. Churchville Road
Bel Air, MD 21014



THE EVERGREEN GARDEN

SPONSORED BY THE MILL OF BEL AIR AND NORTH HARFORD HIGH SCHOOL

Displays a variety of broad leaf and needle evergreens.

THE GROVE FOR THE SENSES

SPONSORED BY THE BEL AIR LIONS CLUB

Features fragrant varieties of trees and flowers with unusual barks. This area is particularly designed for the sight impaired.

THE GAZEBO GARDEN

SPONSORED BY THE UNIVERSITY OF MARYLAND EXTENSION AND HARFORD COUNTY MASTER GARDENERS

Features low growing holly with climbing roses and flowering elements.

THE GRASS GARDEN

SPONSORED BY HARFORD TECHNICAL HIGH SCHOOL AND IVY HILL LAND SERVICES

Features a variety of grasses dispersed with deciduous shrubs.

THE SHADE GARDEN

SPONSORED BY ECOLOGICAL RESTORATION & MANAGEMENT AND BEL AIR HIGH SCHOOL

Features shade loving plants and materials that can be found in local woods.

THE XERISCAPE GARDEN

SPONSORED BY AKEHURST LANDSCAPE SERVICES AND C. MILTON WRIGHT HIGH SCHOOL

Features a variety of plants that are tolerant to hot, dry, sunny conditions.

THE BUTTERFLY & HUMMINGBIRD GARDEN

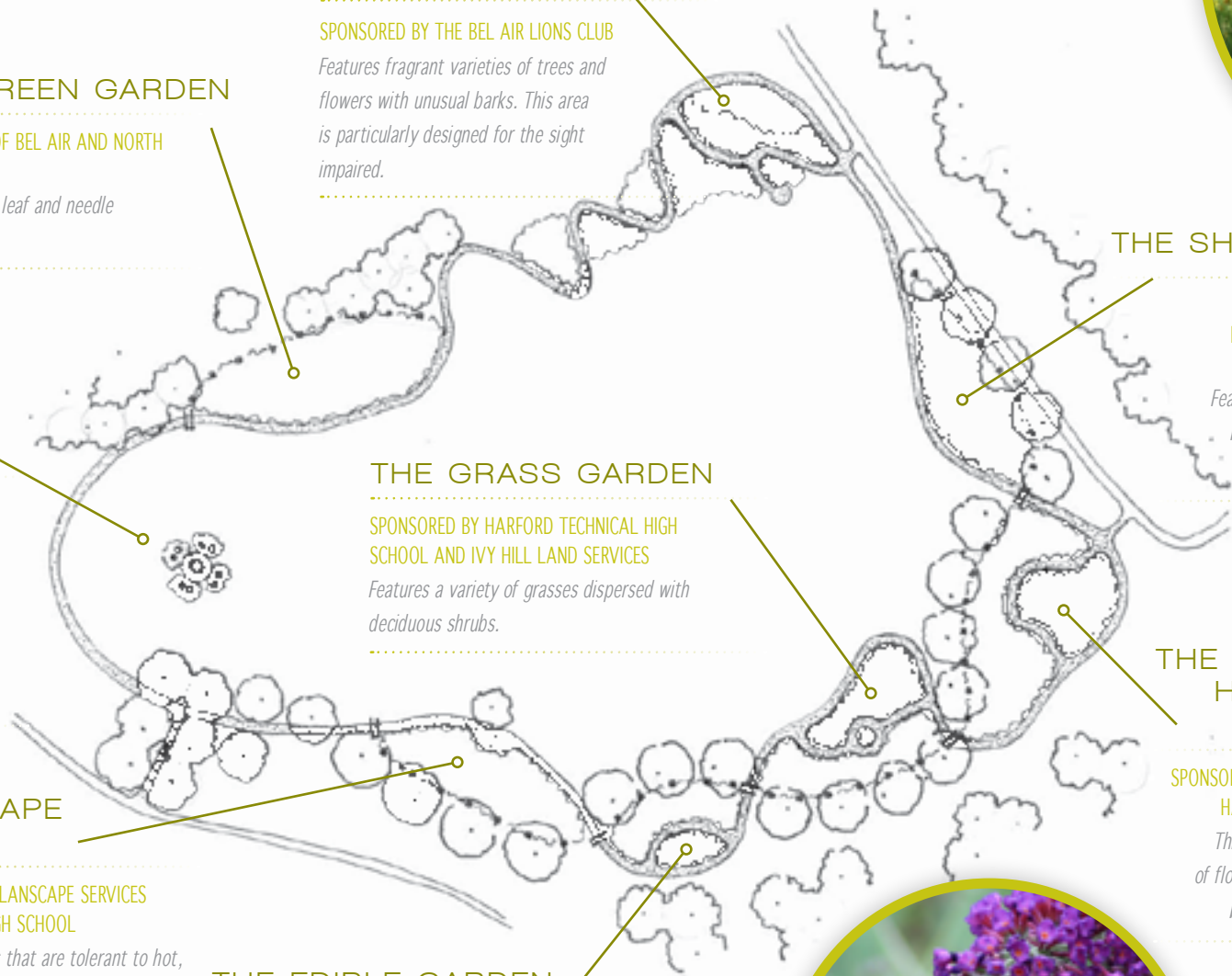
SPONSORED BY KOLLAR NURSERY AND HARFORD COMMUNITY COLLEGE

This area includes a bold display of flowers that attract a variety of butterflies and hummingbirds.

THE EDIBLE GARDEN

SPONSORED BY BUDDY BOY, INC. AND FALLSTON HIGH SCHOOL

Displays plants with components that can be consumed, used for flavoring or part of the meal service



ROCKFIELD PARK
HORTICULTURAL GARDENS