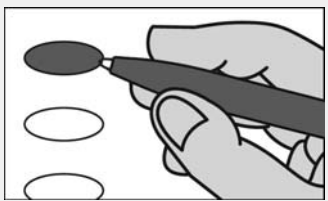


SPEEOWMEN

Official Ballot
Municipal Election
Town of Bel Air
November 02, 2021

Instructions

Making Selections

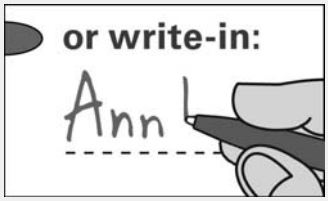


Fill in the oval to the left of the name of your choice. You must blacken the oval completely, and do not make any marks outside of the oval. You do not have to vote in every race.



Do not cross out or erase, or your vote may not count. If you make a mistake or a stray mark, you may ask for a new ballot.

Optional Write-In



To add a candidate, fill in the oval to the left of "or write-in:" and print the name clearly on the dotted line.

Board of Commissioners Vote for up to Two

- Mary F. Chance
- Amy G. Chmielewski
- Paula S. Etting
- Lawrence J. Russell
- or write-in:
.....
- or write-in:
.....

End of Ballot 